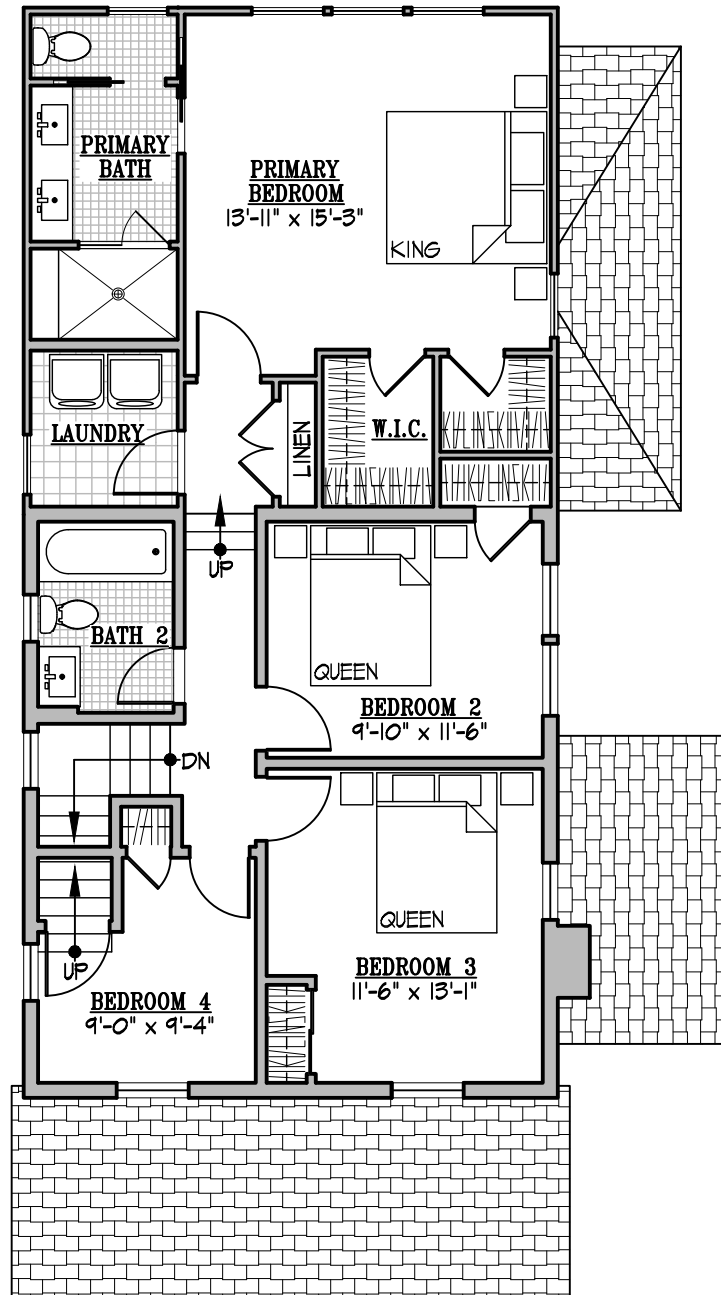


22 W SPRING STREET - FIRST FLOOR PLAN

SCALE: 1/8" = 1'-0"

01/14/26

THIS DESIGN PROPOSAL IS FOR ILLUSTRATIVE PURPOSES ONLY AND NOT PART OF A LEGAL CONTRACT, THE BUILDER RESERVES THE RIGHT TO MAKE CHANGES, WITHOUT NOTICE OR OBLIGATION. 2025 © KULINSKI GROUP ARCHITECTS, P.C. EXPRESSLY RESERVES ITS COMMON LAW AND OTHER PROPERTY RIGHTS IN THESE PLANS. THESE PLANS ARE NOT TO BE REPRODUCED, CHANGED, OR COPIED IN ANY FORM OR MATTER WHATSOEVER, NOR ARE THEY TO BE ASSIGNED TO ANY THIRD PARTY, WITHOUT FIRST OBTAINING THE EXPRESS WRITTEN PERMISSION AND CONSENT OF KULINSKI GROUP

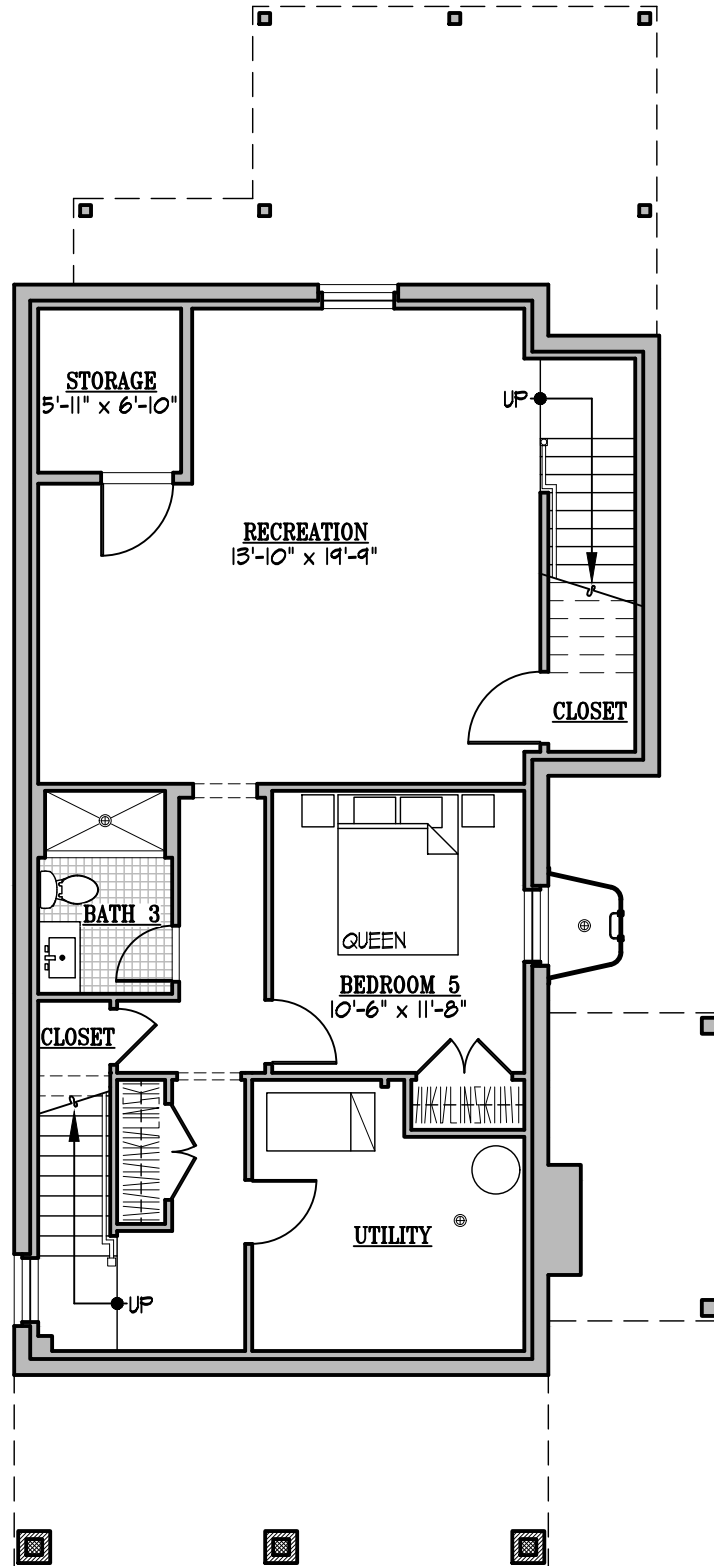


22 W SPRING STREET - SECOND FLOOR PLAN

SCALE: 1/8" = 1'-0"

01/14/26

THIS DESIGN PROPOSAL IS FOR ILLUSTRATIVE PURPOSES ONLY AND NOT PART OF A LEGAL CONTRACT, THE BUILDER RESERVES THE RIGHT TO MAKE CHANGES, WITHOUT NOTICE OR OBLIGATION. 2025 © KULINSKI GROUP ARCHITECTS, P.C. EXPRESSLY RESERVES ITS COMMON LAW AND OTHER PROPERTY RIGHTS IN THESE PLANS. THESE PLANS ARE NOT TO BE REPRODUCED, CHANGED, OR COPIED IN ANY FORM OR MATTER WHATSOEVER, NOR ARE THEY TO BE ASSIGNED TO ANY THIRD PARTY, WITHOUT FIRST OBTAINING THE EXPRESS WRITTEN PERMISSION AND CONSENT OF KULINSKI GROUP

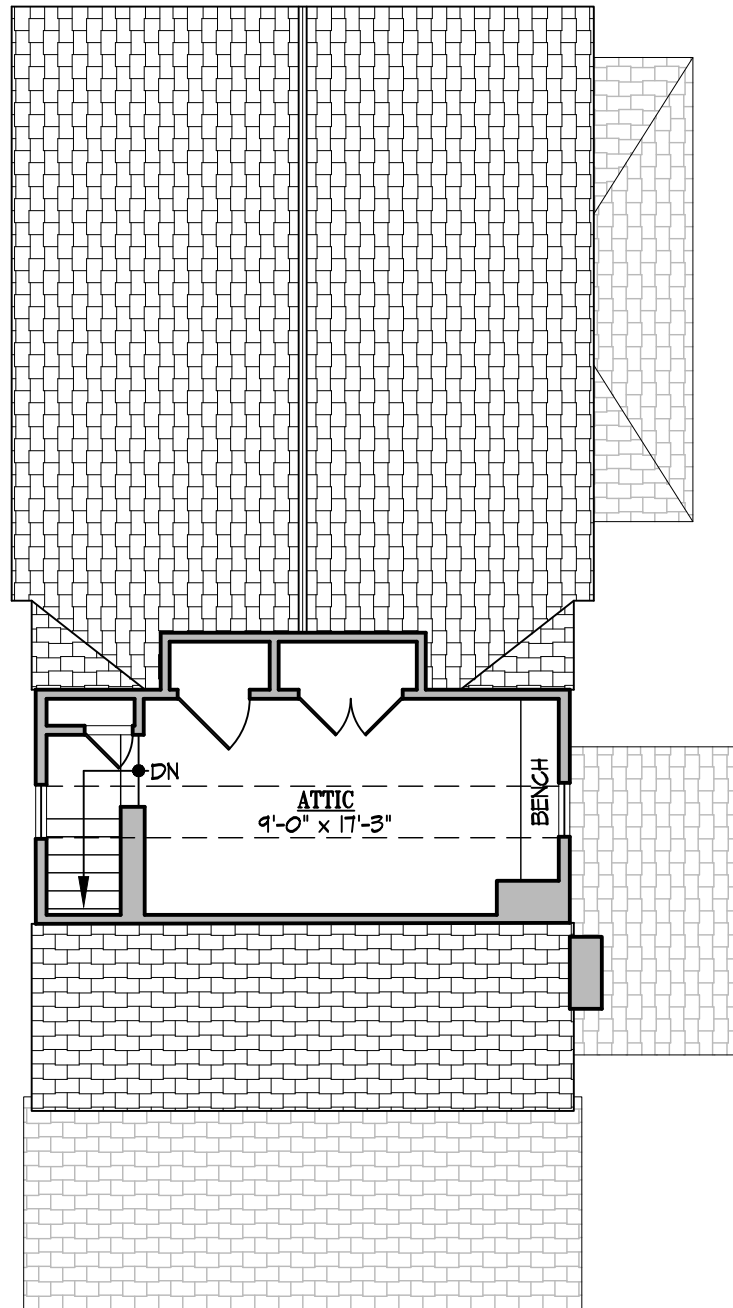


22 W SPRING STREET - BASEMENT PLAN

SCALE: 1/8" = 1'-0"

01/14/26

THIS DESIGN PROPOSAL IS FOR ILLUSTRATIVE PURPOSES ONLY AND NOT PART OF A LEGAL CONTRACT, THE BUILDER RESERVES THE RIGHT TO MAKE CHANGES, WITHOUT NOTICE OR OBLIGATION. 2025 © KULINSKI GROUP ARCHITECTS, P.C. EXPRESSLY RESERVES ITS COMMON LAW AND OTHER PROPERTY RIGHTS IN THESE PLANS. THESE PLANS ARE NOT TO BE REPRODUCED, CHANGED, OR COPIED IN ANY FORM OR MATTER WHATSOEVER, NOR ARE THEY TO BE ASSIGNED TO ANY THIRD PARTY, WITHOUT FIRST OBTAINING THE EXPRESS WRITTEN PERMISSION AND CONSENT OF KULINSKI GROUP



22 W SPRING STREET - ATTIC PLAN

SCALE: 1/8" = 1'-0"

01/14/26

THIS DESIGN PROPOSAL IS FOR ILLUSTRATIVE PURPOSES ONLY AND NOT PART OF A LEGAL CONTRACT, THE BUILDER RESERVES THE RIGHT TO MAKE CHANGES, WITHOUT NOTICE OR OBLIGATION. 2025 © KULINSKI GROUP ARCHITECTS, P.C. EXPRESSLY RESERVES ITS COMMON LAW AND OTHER PROPERTY RIGHTS IN THESE PLANS. THESE PLANS ARE NOT TO BE REPRODUCED, CHANGED, OR COPIED IN ANY FORM OR MATTER WHATSOEVER, NOR ARE THEY TO BE ASSIGNED TO ANY THIRD PARTY, WITHOUT FIRST OBTAINING THE EXPRESS WRITTEN PERMISSION AND CONSENT OF KULINSKI GROUP